



中国认可
国际互认
检测
TESTING
CNAS L5772

Test Report



Report No.: PTC21102903410C-EN01

Issue Date: May. 30, 2022

Page 1 of 6

Applicant: SHEN ZHEN HOMYET PARTS ELECTRONICS CO.,LTD
Address: 306,E Building ,HuaChuangDa Industrial Park,Bao'an 42 District,Shenzhen ,
Guangdong Province,CHINA

The following merchandise was (were) submitted and identified by client as:

Sample Name: USB
Model: 2.0 USB
Manufacturer: SHEN ZHEN HOMYET PARTS ELECTRONICS CO.,LTD
Address: 306,E Building ,HuaChuangDa Industrial Park,Bao'an 42 District,Shenzhen ,
Guangdong Province,CHINA
Sample Received Date: May. 24, 2022
Completed Date: May. 30, 2022

Test Requested: As specified by client, with reference to RoHS Directive 2011/65/EU and its subsequent amendments regulation EU No.2015/863.(Lead (Pb), Cadmium(Cd), Mercury(Hg), Hexavalent Chromium(Cr⁶⁺), PBBs and PBDEs, Phthalates (DBP, BBP,DEHP,DIBP))

Conclusion(s): According to the test results of below test parameters, the submitted sample complied with the requirements for RoHS Directive 2011/65/EU and its subsequent amendments regulation EU No.2015/863.

Test Result(s) and Test Method(s): Please refer to next page(s).

Prepare by: Anne

Checked by: Allie

Approved by: Miya

Anne

Allie

Miya



This report is issued according to the general clauses in www.ptc-testing.com by PTC. Responsibility, guarantee and law restriction are defined in the general service clauses. The report is only responsible for the submitted sample(s) except as otherwise noted.
The report could not be copied without permission of the company.

Precise Testing & Certification (Guangdong) Co., Ltd. (PTC)

Building 1, No. 6, Tongxin Road, Dongcheng Street, Dongguan, Guangdong, China

Tel: 86-769-38808222

Fax: 86-769-38826111

[http:// www.ptc-testing.com](http://www.ptc-testing.com)



Test Report

Report No.: PTC21102903410C-EN01

Issue Date: May. 30, 2022

Page2 of 6

Test Result(s):

1.1) RoHS Directive 2011/65/EU -(Lead (Pb)/Cadmium(Cd)/Mercury(Hg)/Hexavalent Chromium(Cr⁶⁺)/PBBs/PBDEs)

Test Method: IEC62321-3-1: 2013, analyzed by EDXRF.

No.	Materials Description	EDXRF Result(s) (mg/kg)					Chemical Result (mg/kg)	Conclusion
		Pb	Cd	Hg	Cr ⁶⁺	Br		
1	White plastic(main body)	BL	BL	BL	BL	BL	--	PASS
2	Silvery metal (shell)	BL	BL	BL	BL	--	--	PASS
3	Silvery metal (pin)	BL	BL	BL	BL	--	--	PASS

- Note:**
1. mg/kg = milligram per kilogram (ppm).
 2. The result are obtained by EDXRF for primary screening, if the result exceeds the below limit (BL), and further chemical testing.
 3. For EDXRF screening, the result(s) of Cr VI was (were) reported as total chromium and the result(s) of PBBs and PBDEs was (were) reported as total bromine.

Screening limits in mg/kg for regulated elements in various matrices

Elements	Polymer	Metal	Composite Materials
Pb	$BL \leq (700-3\sigma) < X < (1300+3\sigma) \leq OL$	$BL \leq (700-3\sigma) < X < (1300+3\sigma) \leq OL$	$BL \leq (500-3\sigma) < X < (1500+3\sigma) \leq OL$
Cd	$BL \leq (70-3\sigma) < X < (130+3\sigma) \leq OL$	$BL \leq (70-3\sigma) < X < (130+3\sigma) \leq OL$	$LOD < X < (150+3\sigma) \leq OL$
Hg	$BL \leq (700-3\sigma) < X < (1300+3\sigma) \leq OL$	$BL \leq (700-3\sigma) < X < (1300+3\sigma) \leq OL$	$BL \leq (500-3\sigma) < X < (1500+3\sigma) \leq OL$
Cr	$BL \leq (700-3\sigma) < X$	$BL \leq (700-3\sigma) < X$	$BL \leq (500-3\sigma) < X$
Br	$BL \leq (300-3\sigma) < X$	--	$BL \leq (250-3\sigma) < X$

BL = Below Limit, OL = Over Limit, IN = Inconclusive, LOD = Limit of Detection

This report is issued according to the general clauses in www.ptc-testing.com by PTC. Responsibility, guarantee and law restriction are defined in the general service clauses. The report is only responsible for the submitted sample(s) except as otherwise noted.
The report could not be copied without permission of the company.

Precise Testing & Certification (Guangdong) Co., Ltd. (PTC)

Building 1, No. 6, Tongxin Road, Dongcheng Street, Dongguan, Guangdong, China
Tel: 86-769-38808222 Fax: 86-769-38826111 [http:// www.ptc-testing.com](http://www.ptc-testing.com)



Test Report

Report No.: PTC21102903410C-EN01

Issue Date: May. 30, 2022

Page3 of 6

Chemical Testing - Detection Limit & 2011/65/EU Limit:

Name of Chemicals	Detection Limit (mg/kg)	2011/65/EU Limit (mg/kg)
Lead (Pb)	5	1000
Cadmium (Cd)	5	100
Mercury (Hg)	5	1000
Chromium VI (Cr VI)	Non-metal: 10 Metal: Negative	Non-metal: 1000 Metal: Negative
Polybromobiphenyls (PBBs) -Bromobiphenyl (MonoBB) -Dibromobiphenyl (DiBB) -Tribromobiphenyl (TriBB) -Tetrabromobiphenyl (TetraBB) -Pentabromobiphenyl (PentaBB) -Hexabromobiphenyl (HexaBB) -Heptabromobiphenyl (HeptaBB) -Octabromobiphenyl (OctaBB) -Nonabromobiphenyl (NonaBB) -Decabromobiphenyl (DecaBB)	Each 5	Sum: 1 000
Polybromodiphenyl ethers (PBDEs) -Bromodiphenyl ether (MonoBDE) -Dibromodiphenyl ether (DiBDE) -Tribromodiphenyl ether (TriBDE) -Tetrabromodiphenyl ether (TetraBDE) -Pentabromodiphenyl ether (PentaBDE) -Hexabromodiphenyl ether (HexaBDE) -Heptabromodiphenyl ether (HeptaBDE) -Octabromodiphenyl ether (OctaBDE) -Nonabromodiphenyl ether (NonaBDE) -Decabromodiphenyl ether (DecaBDE)	Each 5	Sum: 1 000

This report is issued according to the general clauses in www.ptc-testing.com by PTC. Responsibility, guarantee and law restriction are defined in the general service clauses. The report is only responsible for the submitted sample(s) except as otherwise noted.
The report could not be copied without permission of the company.

Precise Testing & Certification (Guangdong) Co., Ltd. (PTC)

Building 1, No. 6, Tongxin Road, Dongcheng Street, Dongguan, Guangdong, China
Tel: 86-769-38808222 Fax: 86-769-38826111 [http:// www.ptc-testing.com](http://www.ptc-testing.com)



Test Report

Report No.: PTC21102903410C-EN01

Issue Date: May. 30, 2022

Page4 of 6

Test Result(s):

1.2) RoHS Directive 2011/65/EU and its subsequent amendments regulation EU No.2015/863 - (Phthalates DIBP,DBP, BBP, DEHP)

Method: IEC 62321-8: 2017, analyzed by Gas Chromatograph-Mass Spectrometry (GC-MS).

Substances	DBP	BBP	DEHP	DIBP	Conclusion
CAS No.	84-74-2	85-68-7	117-81-7	84-69-5	
Limit(s) (mg/kg)	1000	1000	1000	1000	
RL (mg/kg)	50	50	50	50	
Material No.	Result (mg/kg)				
1	N.D.	N.D.	N.D.	N.D.	PASS

- Note:**
1. mg/kg = milligram per kilogram (ppm).
 2. N.D. = Not Detected (<RL).
 3. RL=Reporting Limit.

Test Material List

The following materials apply only to the samples submitted for phthalates testing.

Material No.	Description (Location)
1	White plastic(main body)

This report is issued according to the general clauses in www.ptc-testing.com by PTC. Responsibility, guarantee and law restriction are defined in the general service clauses. The report is only responsible for the submitted sample(s) except as otherwise noted.
The report could not be copied without permission of the company.

Precise Testing & Certification (Guangdong) Co., Ltd. (PTC)

Building 1, No. 6, Tongxin Road, Dongcheng Street, Dongguan, Guangdong, China
Tel: 86-769-38808222 Fax: 86-769-38826111 [http:// www.ptc-testing.com](http://www.ptc-testing.com)



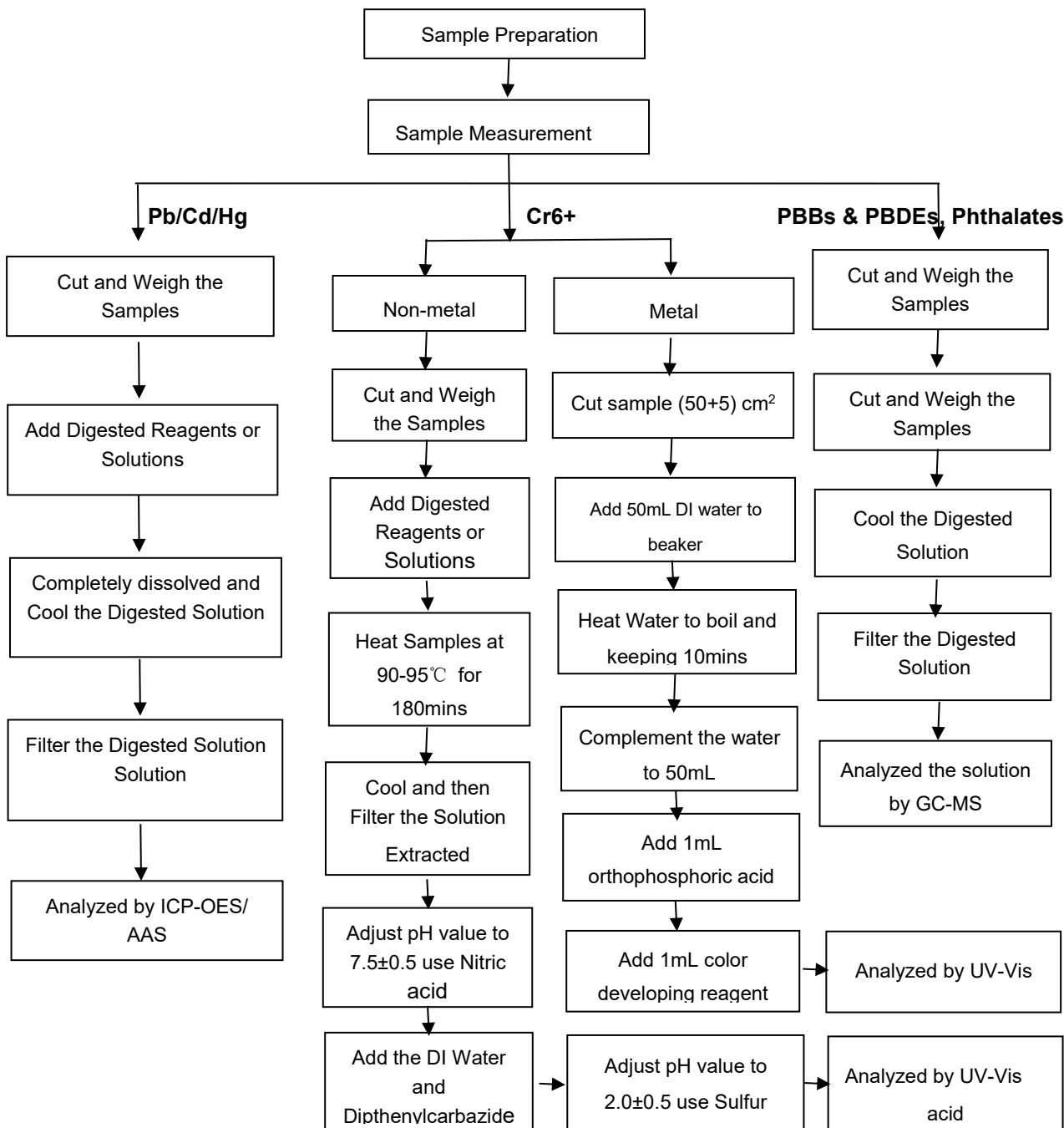
Test Report

Report No.: PTC21102903410C-EN01

Issue Date: May. 30, 2022

Page 5 of 6

Pb/Cd/Hg/Cr6+/PBBs/PBDEs, Phthalates Testing Flow Chart



This report is issued according to the general clauses in www.ptc-testing.com by PTC. Responsibility, guarantee and law restriction are defined in the general service clauses. The report is only responsible for the submitted sample(s) except as otherwise noted. The report could not be copied without permission of the company.

Precise Testing & Certification (Guangdong) Co., Ltd. (PTC)

Building 1, No. 6, Tongxin Road, Dongcheng Street, Dongguan, Guangdong, China

Tel: 86-769-38808222

Fax: 86-769-38826111

[http:// www.ptc-testing.com](http://www.ptc-testing.com)



Test Report

Report No.: PTC21102903410C-EN01

Issue Date: May. 30, 2022

Page6 of 6

Photo(s) of Sample:



End of Report

This report is issued according to the general clauses in www.ptc-testing.com by PTC. Responsibility, guarantee and law restriction are defined in the general service clauses. The report is only responsible for the submitted sample(s) except as otherwise noted. The report could not be copied without permission of the company.

Precise Testing & Certification (Guangdong) Co., Ltd. (PTC)

Building 1, No. 6, Tongxin Road, Dongcheng Street, Dongguan, Guangdong, China

Tel: 86-769-38808222

Fax: 86-769-38826111

[http:// www.ptc-testing.com](http://www.ptc-testing.com)